

WHAT DOES IT INVOLVE?

Here's some general information that could help answer some of the questions you may have. It's easier than you may think.

However, if you are thinking of leaving us a gift in your Will we strongly recommend you consult with your own professional independent advisor. A valid Will is the only guaranteed way to make sure your wishes are carried out.

Some helpful suggested wording can be found on our website at stratfordeast.com/support-us/individuals/leave-a-legacy/

WHERE SHOULD I DIRECT ANY GIFT I MAKE?

You can include Theatre Royal Stratford East in your Will by directing your gift to Pioneer Theatres Ltd, registered charity number 233801.

ARE THERE DIFFERENT TYPES OF GIFT?

Yes, there are two main types of gift you can leave. A pecuniary gift (specific amount of money) or a residuary gift (either a percentage or the remaining amount once all the other gifts and expenses have been arranged).

"I have left a gift in my Will and hope that others may be inspired to do so."

Murray Melvin, member of Theatre Workshop and theatre archivist



Photo: Robert Day

ARE THERE ANY TAX BENEFITS?

As Theatre Royal Stratford East is a registered charity, no Inheritance Tax is payable on the amount of your gift. Making a gift to charity can also help to lower the amount of Inheritance Tax you pay, depending on the size and complexity of your estate.

WHAT IF I ALREADY HAVE MADE MY WILL?

You can make an addition to your Will and this is called a Codicil. This is very simple and can be arranged through your professional advisor. You write down on a separate piece of paper the amendments you would like to make to your Will and sign it. Your signature must be witnessed by two non-beneficiaries.

WHO SHOULD I CONTACT IF I HAVE FURTHER QUERIES?

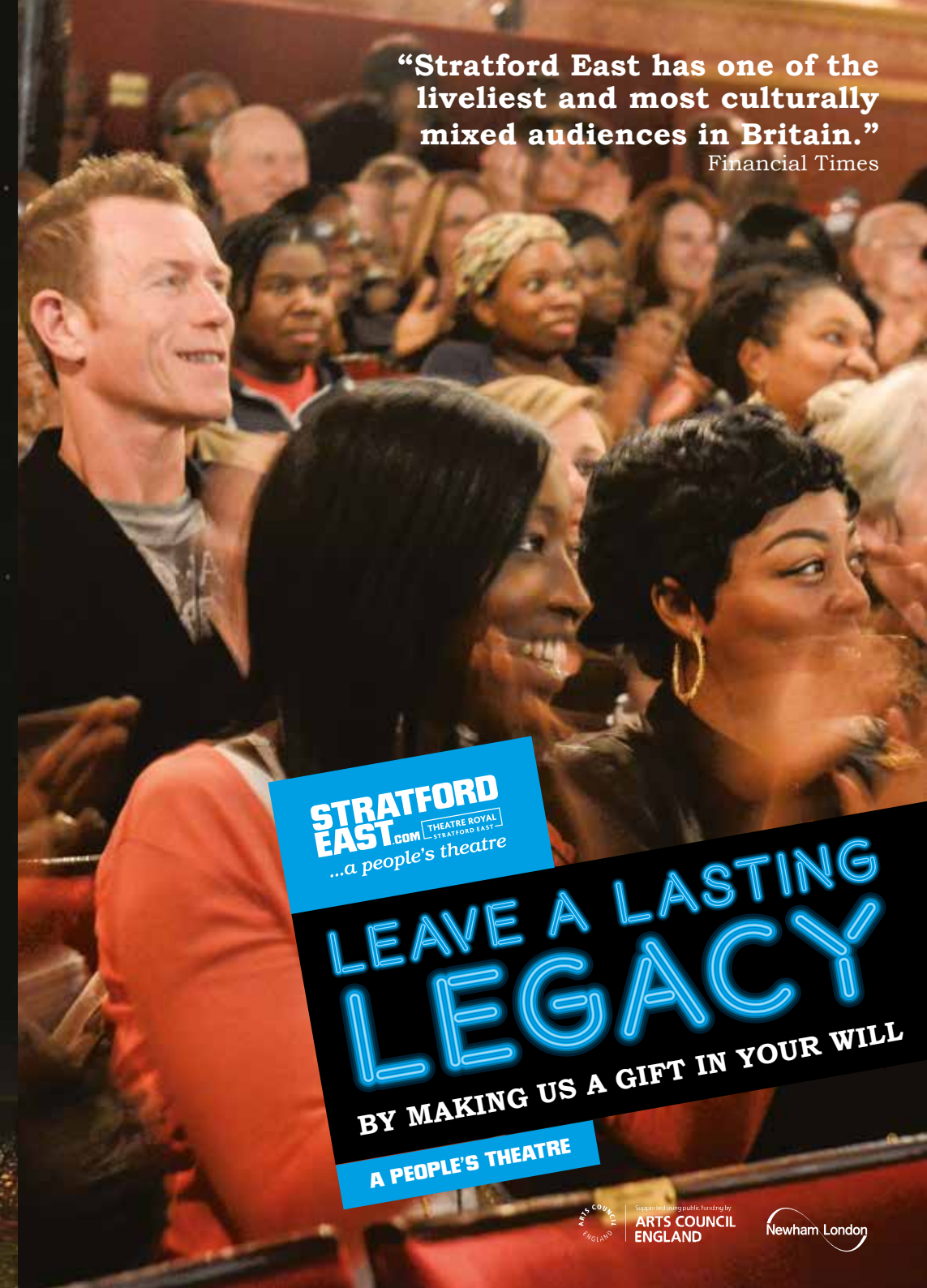
If you would like to talk us in confidence about leaving a gift please contact Sal Goldsmith, Director of Development. You can call her on **0208 2791176**. Alternatively, you can email her at sgoldsmith@stratfordeast.com.

The *Big Life* was first staged at Theatre Royal Stratford East in 2005. A West End transfer followed and was hailed as the first Black British musical in the West End. Music for the show was written by Paul Joseph who had never seen a stage musical before being enticed on to our *Musical Theatre Initiative*. The show was developed and directed by Clint Dyer, who is also an established writer and actor. He has had a long association with us, growing up in Forest Gate and joining our youth theatre aged 15.

Photo: Alastair Muir

"Stratford East has one of the liveliest and most culturally mixed audiences in Britain."

Financial Times



STRATFORD EAST
THEATRE ROYAL
STRATFORD EAST
...a people's theatre

LEAVE A LASTING LEGACY

BY MAKING US A GIFT IN YOUR WILL

A PEOPLE'S THEATRE



Supported by public funding by
ARTS COUNCIL ENGLAND

Newham London

MAKE A GIFT FOR FUTURE GENERATIONS

Theatre Royal Stratford East is a special place – what makes it so is the people that are at the heart of it. We talk about all being part of a ‘family’ and how everyone who comes through our doors stays connected with us in some way.

Since 1953 we have had relatively few Artistic Directors; Joan Littlewood, Ken Hill, Maxwell Shaw, Claire Venables, Philip Hedley and, of course, myself. Each of us has taken the theatre forward in our own way; however, throughout we have kept the same values at the theatre’s core: serving the aspirations and concerns of our community. I believe we truly are ‘A People’s Theatre’.

Our community in the London Borough of Newham shapes every aspect of our life. Today that community is young, ethnically diverse, predominantly working class and hugely vibrant. Arts engagement is the lowest in England and over 100 languages are spoken in our local schools. Over half the population are under 30 years and many young people are still growing up in low income homes.

By telling stories that people can relate to and by keeping ticket prices affordable, we attract audiences that are unlike those found in any other theatre in London or across the UK. We are proud to stage world-class work that is relevant to our audiences and brings people together to share their ideas with each other, as well as with us. And, we do all of this through giving opportunities for the young people and young talent around us to find their own voices.

Theatre Royal Stratford East is a registered charity and support from individuals is a vital cornerstone of our work. Legacy gifts play an important part in securing our long term future; every donation helps and no amount is too small.



Photo: Robert Day

I hope that you can consider yourself part of this family and leave a gift for future generations.

KERRY MICHAEL ARTISTIC DIRECTOR

Front cover and image of Kerry Michael: both photo Robert Day



Alex Jarrett started in our Youth Theatre aged 12. She's now 15 and has performed regularly on the Theatre Royal stage, as well as being cast by Danny Boyle for a featured part in his 2012 Opening Ceremony. Alex has been part of Stratford East's NT Connections programme; the play she was in was selected to be performed on the NT stage. And Alex had been a recent winner of Junior Monologue Slam, which has led to her being signed by an agent. She lives in Newham and her Mum runs the box office.

Photo: Richard Davenport

PLEASE LET US KNOW

We understand that a Will is extremely private. However, it would help us immensely if you let us know of your intended pledge so we can thank you and update you about our work, and our future plans.

Your reply will be treated in the strictest confidence and is in no way legally binding. It is entirely up to you whether you wish to give us any details about your gift.

Title First Name Surname

Address

Postcode Email

Telephone Mobile

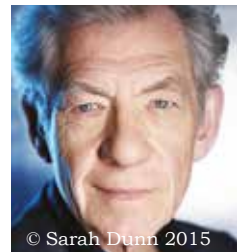
Please indicate which of these is appropriate:

- I have included Theatre Royal Stratford East in my Will
- I am intending to include Theatre Royal Stratford East in my Will
- I would like to talk to someone at Theatre Royal Stratford East

Please return this form to:

Sal Goldsmith
Director of Development
Theatre Royal Stratford East
Gerry Raffles Square
London
E15 1BN

**“In gratitude to
Theatre Royal
Stratford East,
I am leaving
them a legacy –
might you
do too?”**



Ian McKellen

© Sarah Dunn 2015

Pioneer Theatres Ltd Registered in England Number 556251. Registered Charity Number 233801. VAT Number 248934327.

A large print version of this leaflet is available on request.